

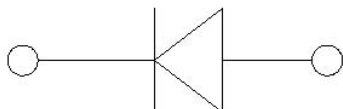
RB521S-40

Small Signal Schottky Diode



Features

- V_R 40V
- I_{FM} 200mA



Mechanical Data

- **Package:** SOD523
- **Terminals:** Tin plated leads, solderable per J-STD-002 and JESD22-B102
- **Polarity:** Cathode line denotes the cathode end
- **Marking:** S

■Maximum Ratings (Ta=25°C Unless otherwise specified)

PARAMETER	SYMBOL	UNIT	Conditions	VALUE
Reverse voltage	V_R	V	$I_R=10\mu A$	40
Forward continuous current	I_{FM}	mA	$T_a=25^\circ C$	200
Non-repetitive Peak Forward Surge Current	I_{FSM}	A	$t=8.3ms$, Half sine-wave	1
Power dissipation	P_D	mW		150
Junction temperature	T_j	$^\circ C$		125
Storage temperature range	T_{stg}	$^\circ C$		-40 to +150
Thermal Resistance From Junction To Ambient	$R_{\theta JA}$	$^\circ C/W$		667

■Electrical Characteristics (Ta=25°C Unless otherwise specified)

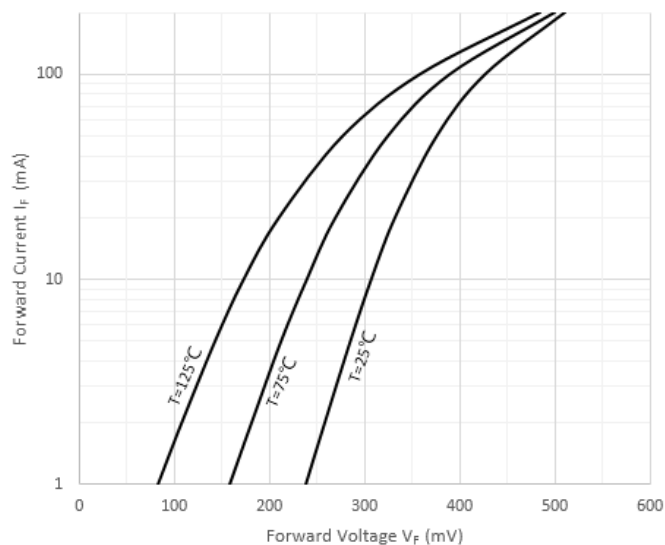
PARAMETER	SYMBOL	UNIT	Conditions	Min	Max
Maximum Forward voltage	V_F	V	$I_F=200mA$		0.59
Maximum Reverse current	I_R	μA	$V_R=30V$		5
Minimum Breakdown voltage	V_R	V	$I_R=100\mu A$	40	

■Ordering Information (Example)

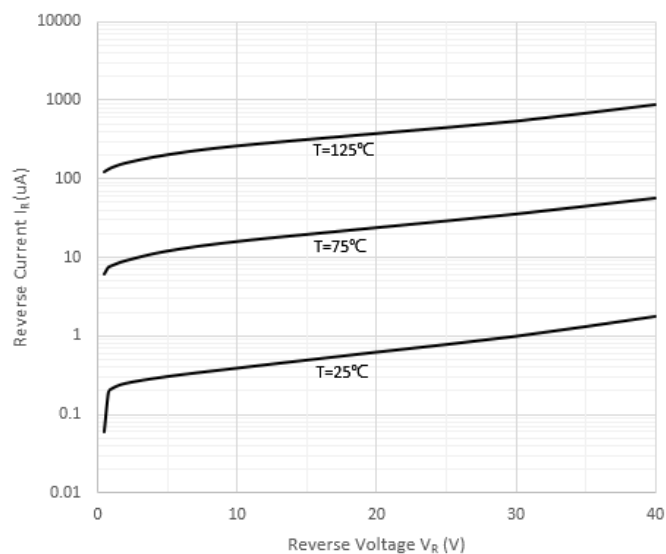
PREFERED P/N	PACKING CODE	UNIT WEIGHT(g)	MINIMUM PACKAGE(pcs)	INNER BOX QUANTITY(pcs)	OUTER CARTON QUANTITY(pcs)	DELIVERY MODE
RB521S-40	F2	Approximate 0.002	8000	80000	320000	7" reel

■ Characteristics (Typical)

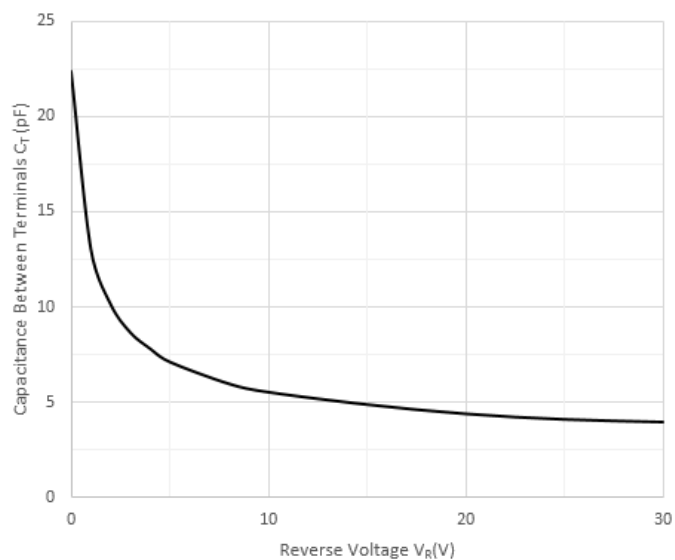
Forward Characteristics



Reverse Characteristics

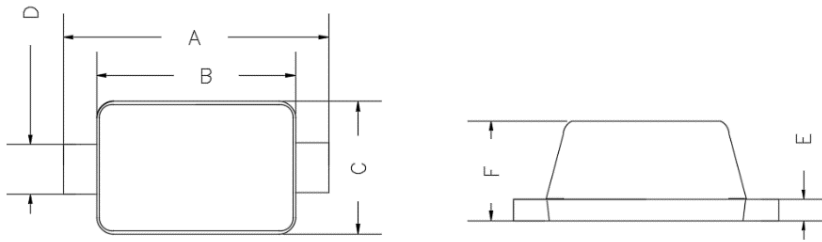


Capacitance Characteristics



■ Outline Dimensions

SOD-523

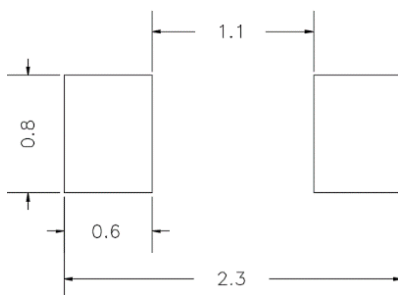


TOP VIEW

SIDE VIEW

DIMENSIONS				
DIM	INCHES		MM	
	MIN	MAX	MIN	MAX
A	0.059	0.067	1.500	1.700
B	0.043	0.051	1.100	1.300
C	0.028	0.035	0.700	0.900
D	0.010	0.014	0.250	0.350
E	0.002	0.008	0.050	0.200
F	0.020	0.028	0.500	0.700

■ Soldering Footprint



UNIT: mm

SUGGESTED SOLDER PAD LAYOUT

Disclaimer

The information presented in this document is for reference only. Shanghai Sunco Electronics Co., Ltd reserves the right to make changes without notice for the specification of the products displayed herein to improve reliability, function or design or otherwise.

The product listed herein is designed to be used with ordinary electronic equipment or devices, and not designed to be used with equipment or devices which require high level of reliability and the malfunction of which would directly endanger human life (such as medical instruments, transportation equipment, aerospace machinery, nuclear-reactor controllers, fuel controllers and other safety devices), Russiansunco or anyone on its behalf, assumes no responsibility or liability for any damages resulting from such improper use of sale.

This publication supersedes & replaces all information previously supplied. For additional information, please visit our website [http:// www.russiansunco.com](http://www.russiansunco.com) , or consult your nearest Russiansunco's sales office for further assistance.